

Sleep Positive Airway Pressure (PAP) Compliance Program Overview

Provider Orientation Session for AdventHealth Advantage Plans



Empowering
the Improvement
of Care

What's Changing?



Monitoring PAP Compliance

- Beginning September 1, 2020, PAP compliance data will be monitored for AdventHealth Advantage Plans members by eviCore healthcare (eviCore).
- 90-day PAP compliance will need to be objectively validated to qualify for purchase authorization.
- For at least the first 90 days of usage, PAP machines must be equipped with a modem.
- Data entry at setup will be critical to proper monitoring and payment.

Current State of Compliance Tracking

- Process for tracking patient compliance can be labor intensive
- Comprehensive online databases from manufacturers are not fully utilized
- Process = authorization of PAP → PAP set up → compliance monitoring → PAP purchase authorization → resupply
- This workflow can be complicated and time consuming
- Durable Medical Equipment (DME) varies in frequency, periodicity and completeness of checks that results in greater variability in outcomes



TherapySupportSM Focus

PAP Compliance Matters

PAP usage data directly from patient device via SleepLink

Standardizes compliance process across all DME providers

Sleep Educators support behavior change

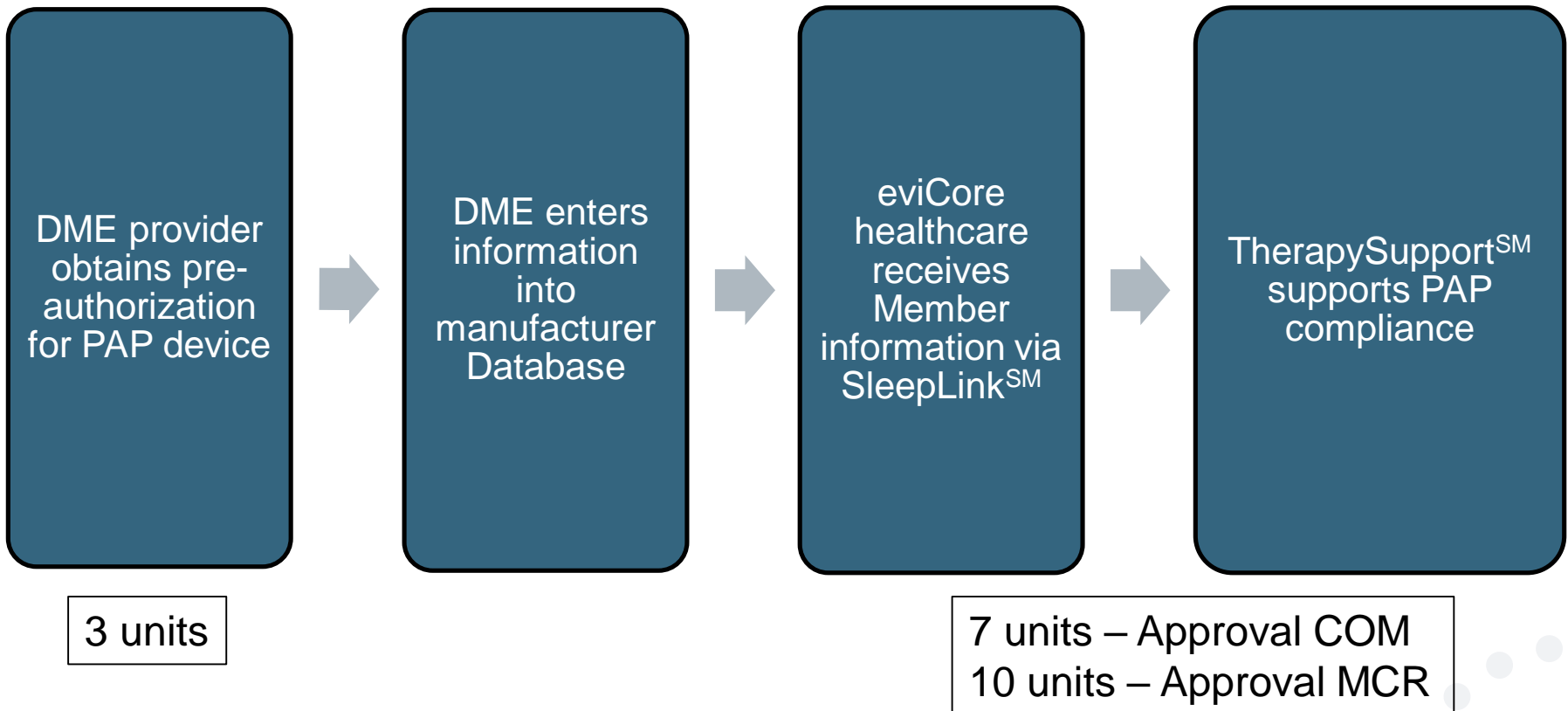
Minimal additional work for DME providers

Enables DME provider reports

Goal: Improve patient outcome and reduce costs

TherapySupportSM Workflow

Process for utilizing compliance data is very straightforward



What does this mean for the DME provider?

*eviCore will monitor member compliance with PAP machines **but DME providers still need to work with their patients***

Non-compliant members

eviCore will outreach to DME and physician periodically to support compliance

- Support for non-compliant members will allow time for member to become comfortable with therapy and will escalate as needed

Compliant members:

eviCore healthcare interaction will be minimal

**Authorization for purchase will be sent to DME when member reaches the compliance goal – you will not need to contact eviCore healthcare for the compliance authorization!

NOTES:

The program supports properly equipped machines from ResMed, Respironics and Fisher & Paykel

Respironics users: Complete BAA and return to eviCore in order to be set up in system

The TherapySupportSM Process

TherapySupportSM

The key to PAP compliance – eviCore gathers PAP usage data from online systems to monitor member usage of therapy

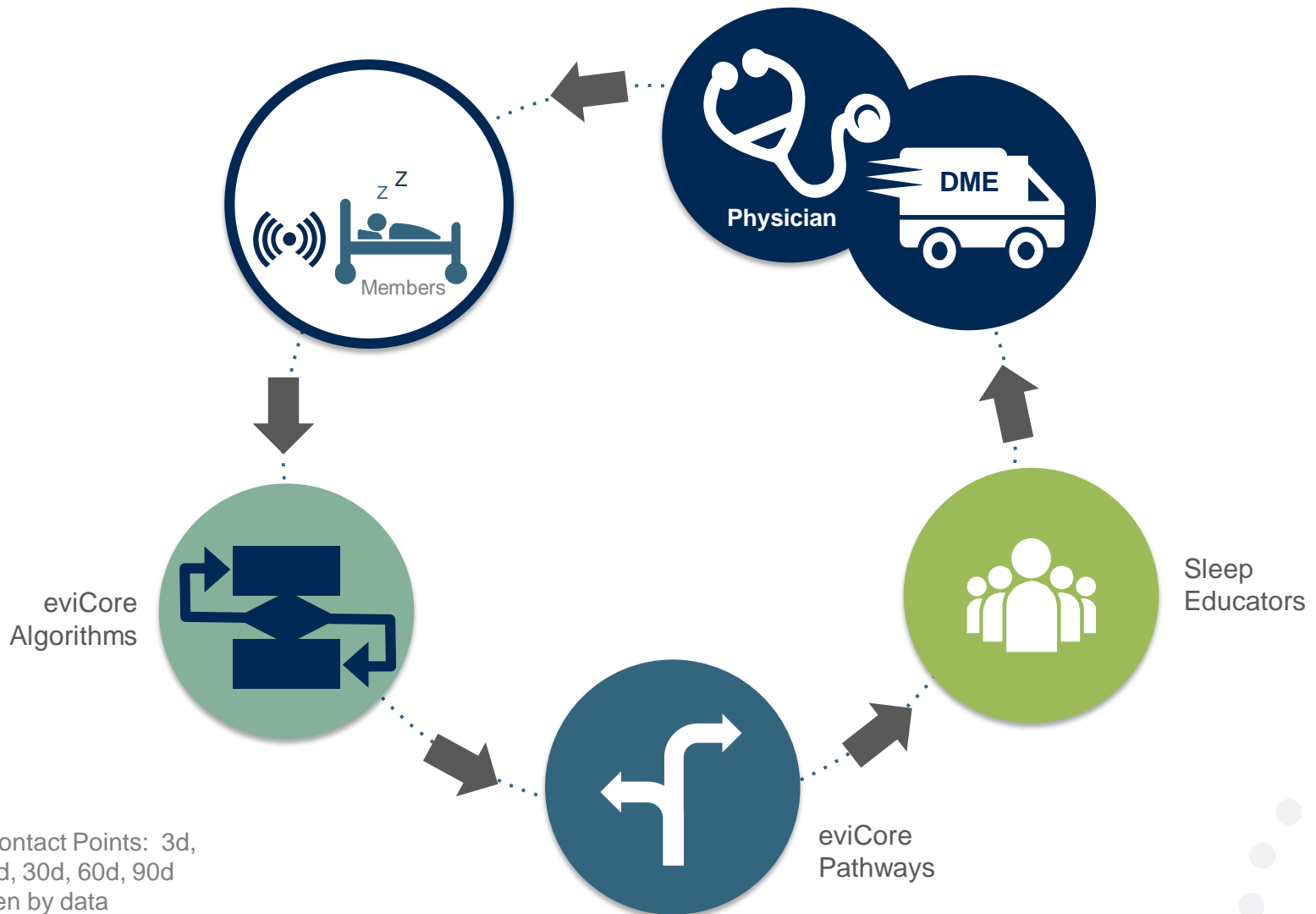
The key to
PAP 
compliance

SleepLinkSM
connects
eviCore to the
three largest
manufacturers
of PAP devices



PAP Therapy Compliance

Once usage is detected, eviCore can support DME providers and physicians in efforts to ensure that members are compliant with their therapy



Outreach Contact Points: 3d, 7d, 14d, 21d, 30d, 60d, 90d and as driven by data

Demonstrations of Online Systems

MANUFACTURER DEMOS

ResMed – www.airview.com

Respironics – www.encoreanywhere.com

Fisher & Paykel – www.fpinfosmart.com

Contact for support: sleeptherapysupport@evicore.com

Thank You

